

SOLAR BIBLE BUS



CHARGING INSTRUCTIONS

With proper care, your Solar Bible Bus' Lithium-Ion battery should perform well for several years. When shipped, the battery is only partially charged. Please fully charge your Solar Bible Bus before the first use, following one of the charging methods below:

- For fastest charge, connect the "USB to micro-USB" cable that came with your Solar Bible Bus or any standard "USB" charger (regulated +5VDC, minimum 300mA) to the micro-USB port on the bottom of the player for about 2 hours or until the LED stops blinking. *While charging, the LED will blink according to the charge level (Green: 70-100%, Yellow: 15-69%, Red: 0-14%).*

1

- Plug player into any standard computer USB port using the "USB to micro-USB" cable for about 4 hours or until the LED stops blinking.

- Depending on the connection type, and the player's battery level, the LED will blink (indicating charging level).
- Physically unplugging the player from the computer will stop the battery charging process.

- For solar charging, place the player with the solar panel directly facing bright sunlight for at least 8 hours. The LED will not blink during solar charging.

Before storing the player for prolonged periods, make sure the battery is at least partially charged. If stored for extended periods, it is recommended to recharge

2

the player *at least* every 3 months, in order to prevent the battery from losing its ability to recharge.

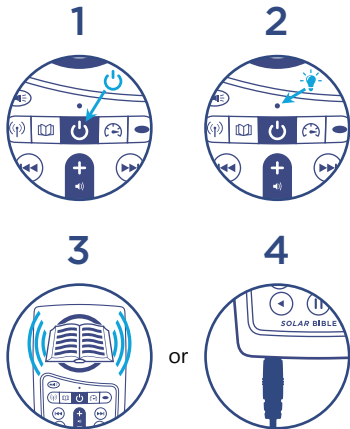
Should the battery become damaged and unable to accept a charge, you can still operate the player using the power cord (charger).

You may also purchase a replacement battery from TTB: 1 800 65 Bible (1-800-652-4253).

3

EASY START

Press and hold the power button until the light turns on. The Solar Bible Bus will start to play automatically.



4

TURNING THE PLAYER ON/OFF

Press and hold in the center of the keypad for 2 seconds to turn the Solar Bible Bus on and begin playback mode (it will beep once). Press again for 2 seconds to turn the player off (it will beep twice).

**While the player is on, a click on will perform a battery test. The LED will blink rapidly for 2 seconds indicating the remaining capacity (Green: 70-100%, Yellow: 15-69%, Red: 0-14%).*

5

SELECTING CONTENT YOU WANT TO LISTEN TO

Green = TTB Red Book = Bible

The Solar Bible Bus has two content groups onboard:

Thru The Bible Teachings (Sections 1-8)
Bible (Sections 9-11)

**See content chart under "TTB Order of Books and # of Programs" on panel 17.*

While in the TTB/microSD content:

Click to skip to the next Section within the TTB/microSD content.

If a microSD card is present, a 2-second press on will switch between the TTB content and the microSD content.

6

Press and hold for 2 seconds to go listen to the Bible.

**During playback of the TTB content or microSD card, the LED will be Green.*

While in the Bible:

Click to skip to the next Section within the Bible: Genesis, Psalms and Matthew.

Press and hold for 2 seconds to go to the TTB audio.

**During playback of the Bible Scripture content, the LED will be Red.*

7

NAVIGATING DURING PLAYBACK

Each Section within each Content Group is subdivided into one or more Books, containing one or more Programs or Chapters.

Click or to jump backward or forward one Book. A 2-second press will skip up to 5 Books at a time until the button is released or the end/beginning of the current Section is reached.

Click or to jump backward or forward one Program/Chapter. A 2-second press will skip up to 5 Programs/Chapters at a time until the button is released or the end/beginning of the current Book is reached.

Click or to jump backward or

8

forward *approximately* 20 seconds* in the current Program/Chapter. A 2-second press will perform a fast rewind/fast forward until the button is released or the end/beginning of the Program/Chapter is reached.

**The actual time skipped may vary slightly.*

LED TORCH

Use to control the LED Torch and its intensity. Each click will change the intensity as follows:

Low > Medium > High > OFF

Press and hold to turn on the Torch in high intensity. The Torch will remain on until the button is released.

**The Torch may be used while listening or the player is off.*

9

FM RADIO

A 2-second press on will put the player in FM radio mode (your Solar Bible Bus will beep once).

**While in FM radio mode the LED will be yellow.*

Click or to decrease/increase the frequency by 0.1MHz. A 2-second press will scan for the previous/next FM station.

When the scan reaches the beginning/end of the FM frequency range (87.0 – 108.0MHz) your Solar Bible Bus will beep. An additional click will loop and continue the scan from the end/beginning respectively.

The buttons may be pre-programmed with default frequencies. A click on each will tune the

10

FM radio to the setting for that button. A 2-second press will re-program that button to the current frequency.

SPEED CONTROL

A 2-second press on will put your Solar Bible Bus in speed control mode allowing you to adjust the speed for playback.

A click on or will adjust playback speed. The LED will alternate **red** and **green** as you change the speed. A continuous press will decrease/increase until the minimum/maximum speed is reached.

Pressing any other button will exit speed control mode, saving the set playback speed.

11

While still in speed control mode, a 2-second press on will reset the speed to normal.

**Speed control will be saved when switching modes or turning your Solar Bible Bus off.*

VOLUME, SPEAKERS AND EARPHONES

Insert earphone or speaker plug into the standard 3.5mm audio jack on the bottom of your Solar Bible Bus.

Click or to decrease or increase volume. The volume will remain set at this level even after your Solar Bible Bus is turned off and restarted.

12

PAUSING/ BOOKMARKING

Click to pause playback. To resume, click again or one of the other navigation buttons .

A 2-second press on will place a bookmark at the current position. Your Solar Bible Bus will beep 3 times and be put in pause mode. When the player is turned back on later, playback will begin from the bookmark.

**The player supports a single user-set bookmark.*

***If the player remains Paused for over 2 minutes, the player will place a bookmark at that playback position, beep twice and turn off.*

13

CHANGE/RESET THE BOOKMARK

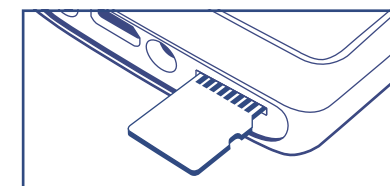
To reset the bookmark to the beginning of the TTB content, do the following:

1. While in Playback mode, click .
2. Once the player is paused, press for 2 seconds (your Solar Bible Bus will beep once).
3. The bookmark is now reset to the beginning.

You may resume playback or turn your Solar Bible Bus off.

14

USING THE MICROSD CARD



The Solar Bible Bus can also play audio from a properly formatted microSD card. With the player facing you, insert a card with the brass contacts of the card showing face up until it locks in place.

Once the microSD card is loaded, and the player is in the TTB sections (LED is **green**), press and hold for 2 seconds. The player will beep once and begin playback from the microSD card.

15

*During playback from the microSD card, the LED will be **Green**.

To remove the microSD card, gently push it in. The reader will unlock and slightly push the card out so you can remove it. If your Solar Bible Bus was in playback mode from the card when removed, it will beep twice and revert to the TTB programs. If any other function was active, it will continue with no change.

You can view, format and prepare a microSD card while plugged in your Solar Bible Bus card reader when it's connected to a Computer using a USB to micro-USB cable that came with your Solar Bible Bus. You may also do the same with the card loaded in a microSD adaptor connected to a Computer.

TTB ORDER OF BOOKS AND # OF PROGRAMS


- Section 1**
 - Introduction (1)
 - Guidelines (10)
 - Genesis (55)
 - Matthew (39)
 - Exodus (36)
 - Mark (19)
 - Leviticus (31)
 - Luke (29)
 - Numbers (19)
- Section 2**
 - John (40)
 - Deuteronomy (20)
 - Joshua (13)
 - Judges (11)
 - Ruth (7)
- Section 3**
 - Acts (35)
 - 1 Samuel (17)
 - 2 Samuel (13)
 - 1 Kings (14)
 - 2 Kings (14)
 - Romans (36)*
 - 1 Chronicles (12)
 - 2 Chronicles (17)
 - 1 Corinthians (24)
 - Ezra (7)
 - Nehemiah (12)
- Section 4**
 - 2 Corinthians (20)
 - Esther (10)
 - Job (23)

*Includes 5 additional seasonal programs.

- Galatians (20)
- Psalms (54)
- Ephesians (28)
- Proverbs (33)
- Philippians (18)
- Section 5**
 - Ecclesiastes (12)
 - Song of Solomon (13)
 - Colossians (11)
 - Isaiah (49)
 - 1 Thessalonians (14)
 - 2 Thessalonians (6)
 - Jeremiah (20)
 - Lamentations (3)
- Section 6**
 - 1 Timothy (12)
 - 2 Timothy (8)
 - Ezekiel (25)
 - Titus (5)
 - Philemon (1)
 - Daniel (30)
- Hebrews (43)
- Hosea (15)
- James (16)
- Section 7**
 - Joel (8)
 - 1 Peter (15)
 - Amos (16)
 - 2 Peter (14)
 - Obadiah (5)
 - Jonah (11)
 - 1 John (25)
 - Micah (17)
 - 2 John (5)
- Section 8**
 - 3 John (4)
 - Nahum (8)
 - Habakkuk (10)
 - Zephaniah (7)
 - Jude (12)
 - Haggai (9)
 - Zechariah (34)

- Malachi (15)
- Revelation (66)
- Section 9**
 - Genesis - Job
- Section 10**
 - Psalms - Malachi
- Section 11**
 - Matthew - Revelation

RESETTING PLAYER DEFAULTS


Resetting player defaults (listed below) is done by pausing the player and pressing  for 2 seconds (your Solar Bible Bus will beep 3 times and turn off).

- Last used mode (audio playback)
- Playback bookmark (beginning)
- Playback speed (normal)
- Volume level (medium)
- FM radio bookmark (first preset frequency)
- Preset frequencies (per the configuration file)

PROBLEMS WITH THE PLAYER?

You should enjoy years of listening and learning Thru the Bible with your Solar Bible Bus. Your Solar Bible Bus comes with a one year Limited Warranty which covers any defects in material or workmanship under normal use.

If however your Solar Bible Bus will not turn on, please try the following:

1. Make sure the battery is charged according to the "Charging Instructions".
2. If the battery is OK, force a reboot of the player by holding  for about 10 seconds. Your Solar Bible Bus should restart automatically.
3. If #2 fails, reset the player by gently

inserting the end of a paper clip for a few seconds into the reset hole on the back of the player, just above the left-most screw holding the back panel. Then try to turn the player on.

4. If none of the above succeeded, please contact TTB for support: 1 800 64 Bible (1-800-652-4253).

WARNINGS



- Care must be taken to set the volume at the lowest level that can be heard comfortably. Prolonged exposure to loud sound can cause gradual hearing loss.
- DO NOT expose player or battery to fire or extreme heat.
- Stop using your Solar Bible Bus if you observe abnormal heat, odor, discoloration, leakage or deformation, especially in the area below the solar panel. Refer to a qualified technician for service.
- If the battery is removed from the player, handle it with care. Keep the

exposed battery out of reach of children. DO NOT burn, puncture, disassemble, or modify battery.

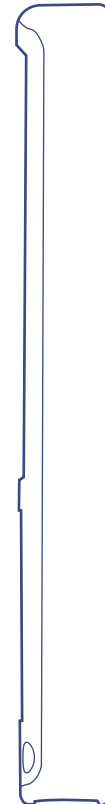
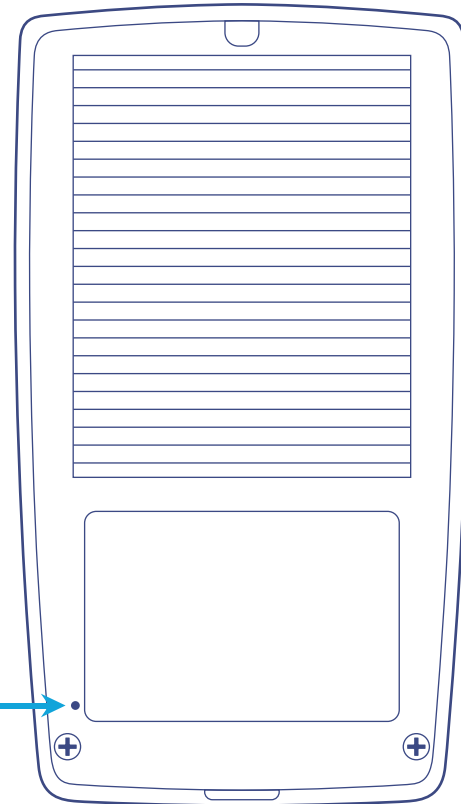
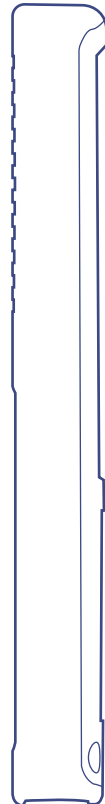
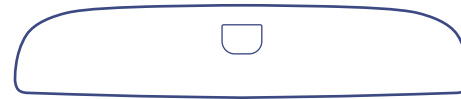
- If battery leaks, dispose of it carefully in accordance with all local laws. Wash any skin or clothing exposed to battery liquid and avoid swallowing or contact with eyes. In the case of swallowing or contact with eyes, seek medical care immediately.



Made in China

TTB - Solar Bible Bus User Manual - US Letter - English - 2018.05.15-1.0.0

SOLAR BIBLE BUS ALL SIDES



Reset Button

